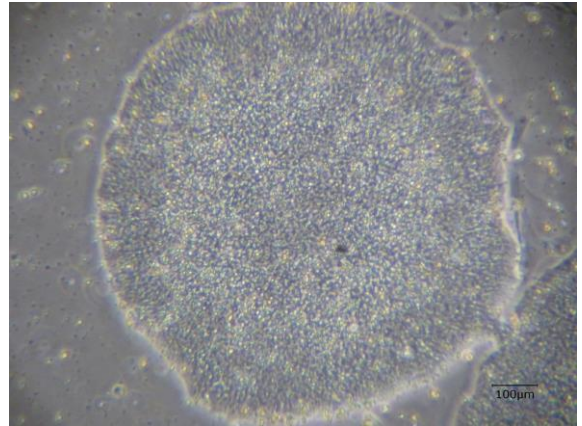


## 【 CiRA-j-1345 】 Morphology of iPSC colonies

CiRA-j-1345-A: passage-3



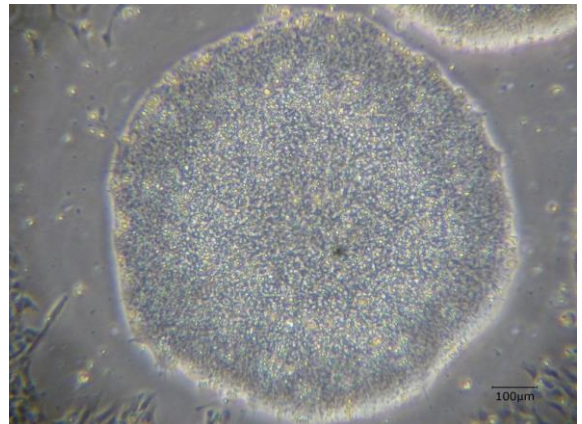
CiRA-j-1345-B: passage-3



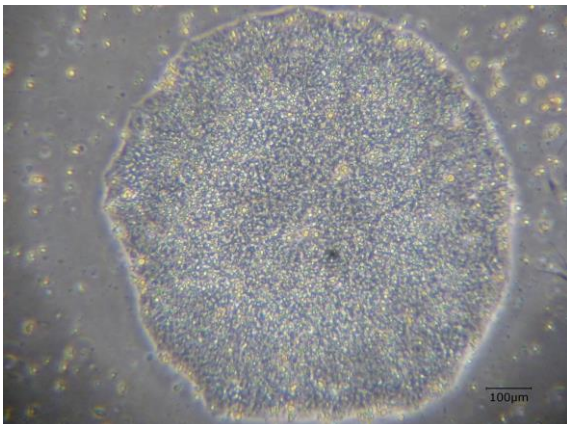
CiRA-j-1345-C: passage-3



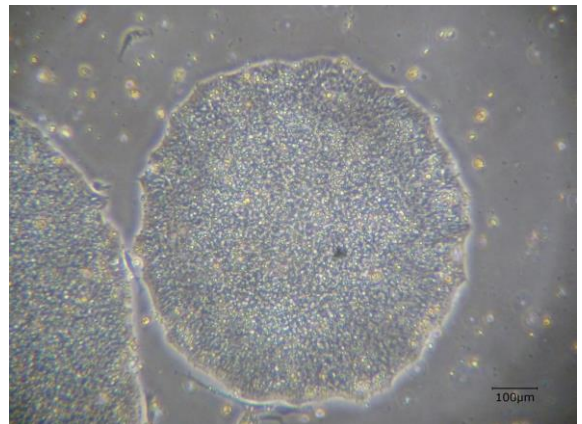
CiRA-j-1345-D: passage-3



CiRA-j-1345-E: passage-3



CiRA-j-1345-F: passage-3



( All images were captured at 4x magnification )